



**Mercury Racing 50<sup>th</sup> Anniversary  
Sheboygan Event Application**

**August 11<sup>th</sup> -13<sup>th</sup> 2023**



MERCURY RACING  
**MIDWEST**  
CHALLENGE

INTRODUCTION:

MERCURY – STUART HALEY – In person

F1 RACING – TIM SEEBOLD – On Zoom

P1 OFFSHORE RACING – MICHELLE PETRO – On Zoom





## OVERALL SITE PLAN





OVERFLOW PITS AND ACTIVATION

PITS

ARMORY

VIP AREA

1

2

Sheboygan

Image Landsat / Copernicus

Google Earth





## FRIDAY NIGHT BLOCK PARTY OPTIONS

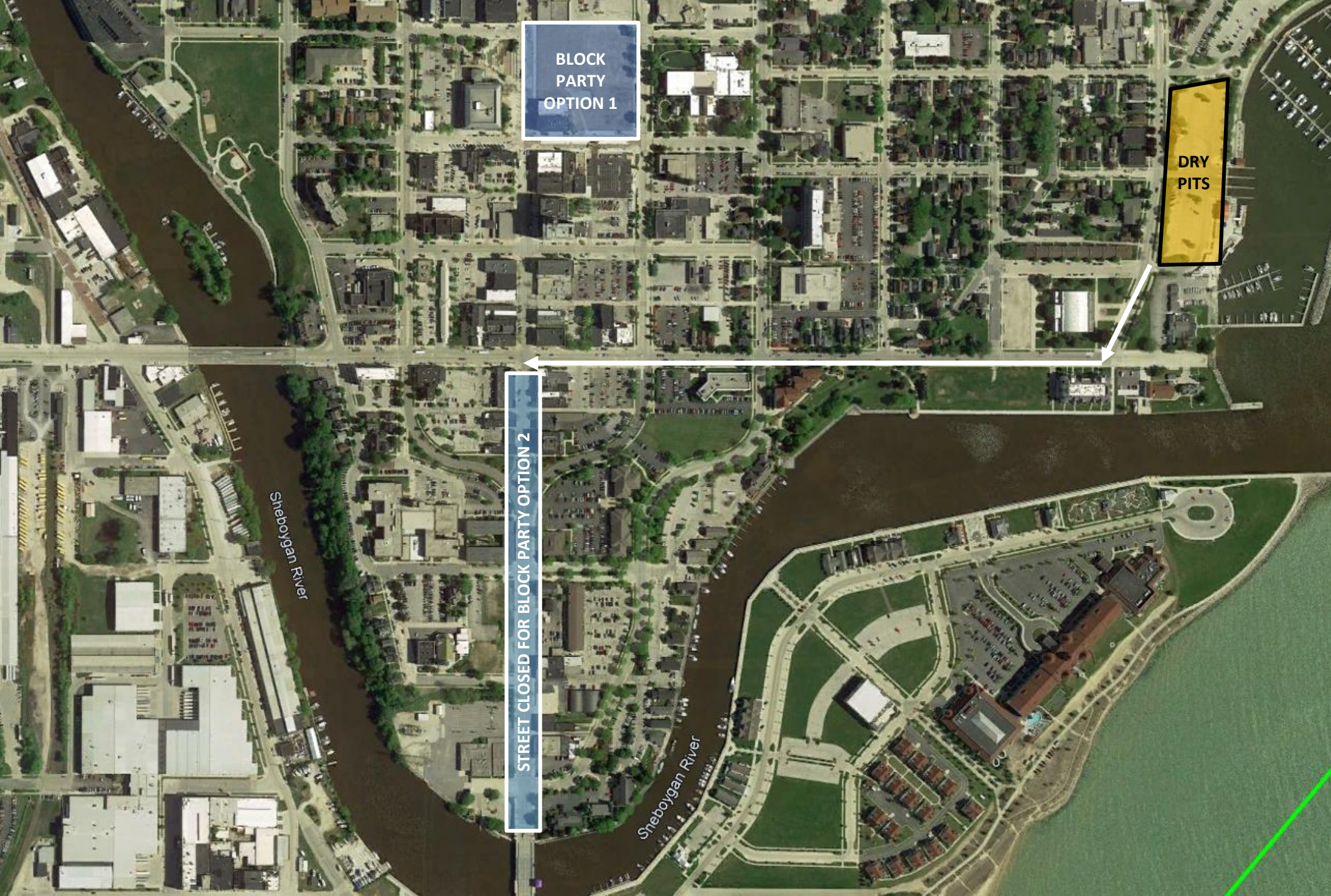




**DEPENDING ON WHERE THE BLOCK PARTY WILL BE HELD:**

ROAD CLOSURE 2 HOURS BEFORE THE BOATS MOVE TO THE BLOCK PARTY AREA.

POLICE ESCORT FOR THE BOATS TO BE ABLE TO MOVE EASILY THROUGH THE STREETS ON THE WAY TO THE BLOCK PARTY.



BLOCK PARTY OPTION 1

DRY PITS

STREET CLOSED FOR BLOCK PARTY OPTION 2

FRIDAY NIGHT BLOCK PARTY MEET AND GREET

MERCURY RACING  
**MIDWEST**  
CHALLENGE

**PIT PLANS**







REQUESTED PIT SPACE

OVERFLOW PIT SPACE AND ACTIVATION

MARINA PARKING, MEDIA AND STAFF

MERCURY RACING  
**MIDWEST**  
CHALLENGE

**PITS:**

REQUEST THE CLOSURE OF THE BOAT RAMP FROM  
AUG 11<sup>TH</sup> 2023

08:00 FRIDAY MORNING 08/11

06:00 SATURDAY MORNING 08/12

06:00 SUNDAY MORNING 08/13





-  CLASS 1
-  SUPER CAT
-  F1
-  SUPER STOCK

CRANE

FUEL

Man Youth Sailing Center

ALS-  
EMS

Boat Ramp

CRANE

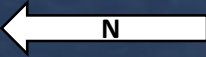




MERCURY RACING  
**MIDWEST**  
CHALLENGE

**RACECOURSES**





F1 - 1 MILE COURSE

P1 OFFSHORE - 6 MILE COURSE

START RUN 1.5 miles

PITS  
ELLIS HISTORICAL DISTRICT

VIP

KING PARK

SOUTH PIER

Sheboygan  
Sheboygan

SOUTH LAKE

ROOSEVELT PARK

FARNSWORTH

DEER GAZE





2

3

F1 COURSE

F

1

2

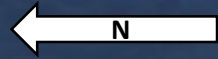
1

PITS

ELLIS HISTORICAL DISTRICT



SAFETY ZONE / SPECTATOR FLEET MUST STAY OUTSIDE THIS ZONE. PERIMETER WILL BE MARKED WITH A "BUCKET LINE" – WHICH MARKS THE ON WATER DESIGNATED SPECTATOR AREA. WE REQUEST ON WATER SUPPORT TO MAINTAIN THE INTEGRITY OF THE SPECTATOR AREA AND PREVENT ANY ENCROACHING VESSELS ON TO THE COURSE.



F1 - 1 MILE COURSE

1500FT

P1 OFFSHORE - 6 MILE COURSE

START RUN 1.5 miles

ELLIS HISTORICAL DISTRICT

Sheboygan  
Sheboygan

SOUTH PIER

KING PARK

SOUTH LAKE

FARNSWORTH

ROOSEVELT PARK

DEER GAZE

F

3

4

2

1

5

10

6

7

8

9

MERCURY RACING  
**MIDWEST**  
CHALLENGE

**VIP AREA**



VIP AREA WILL BE OPEN – FRIDAY FOR TESTING AND  
POLE RACING  
PREMIUM DAYS SATURDAY AND SUNDAY.

PROPOSED VIP  
ASSUMING CONSTRUCTION WOULD BE COMPLETED.  
PROVIDES IDEAL VIEWING OF ALL THREE COURSES

1. OFFSHORE
2. F1
3. DRAG AND DEMO COURSE

THIS AREA, I BELIEVE, IS CITY GROUND.

PROPOSED SECONDARY VIP AREA.  
IF CONSTRUCTION IS NOT COMPLETE

VIP PARKING

Parking

S Pier Dr

S Pier Dr

S Pier Boardwalk

S Pier Boardwalk

MERCURY RACING  
**MIDWEST**  
CHALLENGE

**SAFETY**



## SAFETY OUTLINE:

<b>PATROL BOATS:</b>	<b>11 VESSELS</b>
<b>DIVE / RESCUE BOATS:</b>	<b>10 VESSELS</b>
<b>COURSE INTEGRITY:</b>	<b>1 VESSELS</b>
<b>P1 RESCUE RHIB</b>	<b>1 VESSEL</b>
<b>P1 RESCUE PWC</b>	<b>4 VESSELS</b>
<b>SCORING BOAT:</b>	<b>1 VESSEL</b>
<b>PACE BOATS</b>	<b>2 VESSELS</b>

**1 HELICOPTER DEDICATED TO DIVE / RESCUE**  
**1 DEDICATED EMS / AMBULANCE ON STANDBY**

**LAW ENFORCEMENT PATROL VESSELS:**  
**WE WOULD LIKE TO REQUEST A MINIMUM OF 6**

**FIRE RESCUE VESSELS:**  
**WE WOULD LIKE TO REQUEST A MINIMUM OF 2**

**USCG AUX PATROL VESSELS:**  
**WE WILL REQUEST USCG PRESENCE FOR THE PERIMETER**

**ALL P1 DIVE RESCUE PERSONEL SPECIALISE IN POWERBOAT RACING RESCUE. THEY ARE ALSO MEDICALLY TRAINED FIRST RESPONDERS IN EMERGENCY SERVICES SUCH AS EMT, PARAMEDIC, SURF RESCUE AND FIRE RESCUE.**



### KEY FOR FOLLOWING SAFETY ZONES AND COURSE OUTLINE



**DIVE RESCUE**



**PATROL BOAT / PERIMETER**

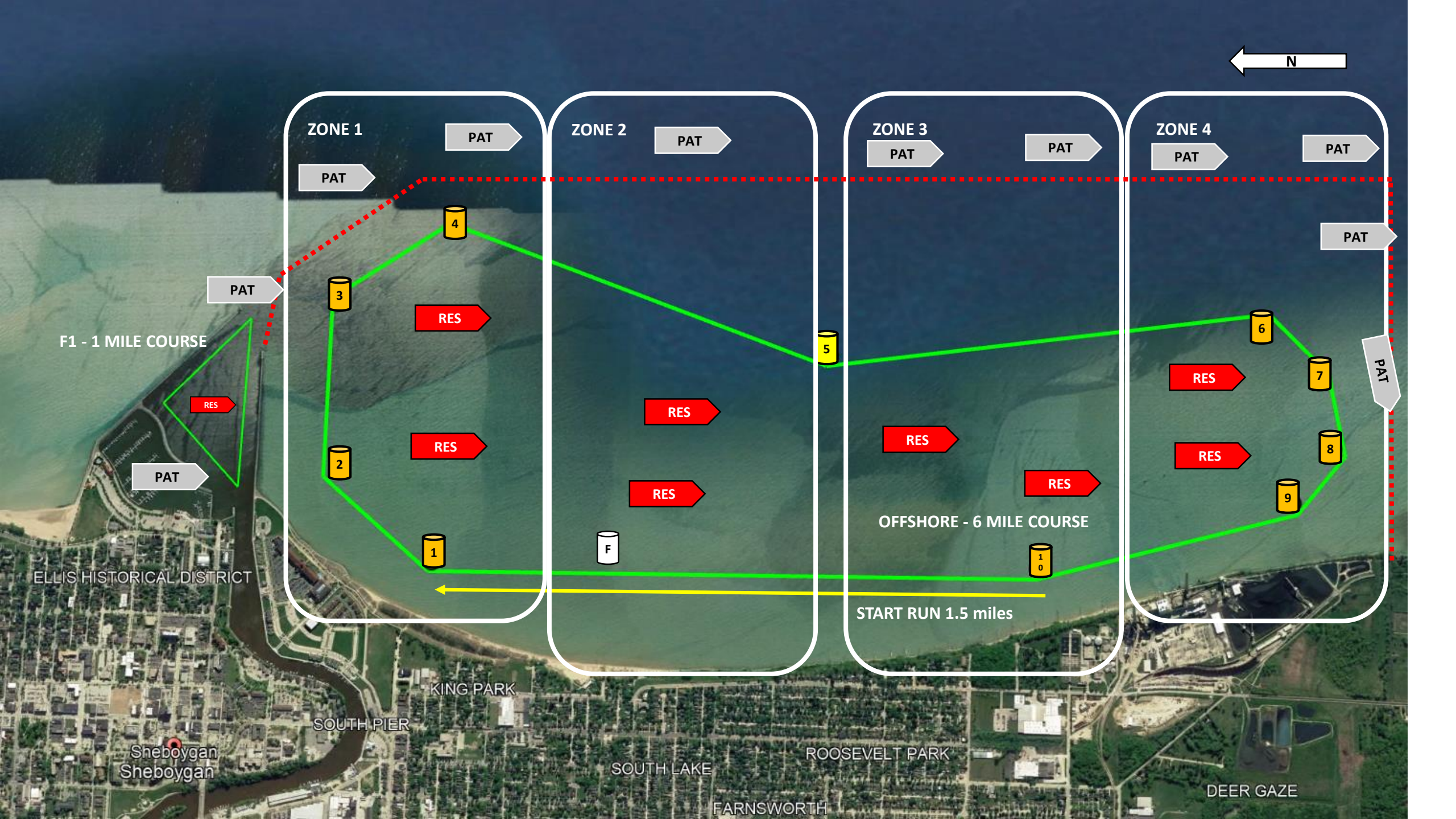
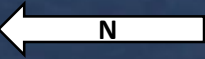


**AMBULANCE ON STANDBY**



**DEDICATED DIVE RESCUE HELICOPTER**





F1 - 1 MILE COURSE

ELLIS HISTORICAL DISTRICT

Sheboygan  
Sheboygan

SOUTH PIER

KING PARK

SOUTH LAKE

FARNSWORTH

ROOSEVELT PARK

DEER GAZE

ZONE 1

ZONE 2

ZONE 3

ZONE 4

PAT

PAT

PAT

PAT

PAT

PAT

PAT

PAT

PAT

PAT

3

4

2

1

5

F

10

6

7

8

9

RES

RES

RES

RES

RES

RES

RES

RES

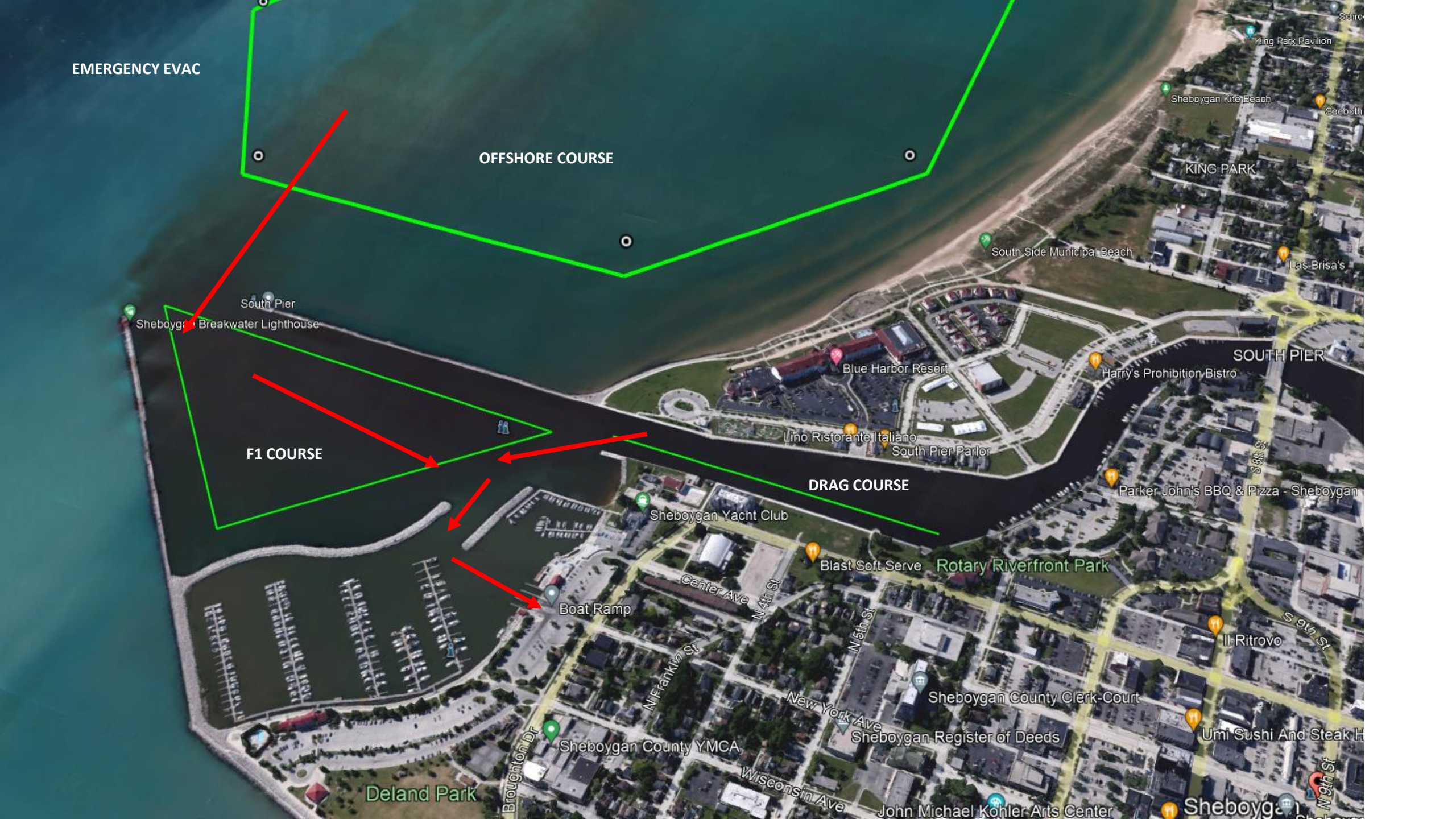
START RUN 1.5 miles

EMERGENCY EVAC

OFFSHORE COURSE

F1 COURSE

DRAG COURSE





EMERGENCY EVAC RAMP

ALS-EMS

CRANE

Boat Ramp

Ocean Youth Sailing Center